

Tusk License Plate Bracket

Part Number: 2025640003

Thank you for purchasing the Tusk License Plate Bracket. Please take note that this is a semi-universal license bracket and is meant to fit a variety of applications. The mounting methods shown in the examples of these instructions may be used on various machines. Adhere to the information and instructions below to get the most out of your Tusk License Plate Bracket.



Assembly: Before you throw any packaging away, make sure you received all the necessary hardware:

Hardware:

License Plate Bracket	(1)
M6x1.0x25mm Button head Bolt	(2)
M6x1.0x16mm Hex Head Bolt	(4)
Spacer	(2)
M6 Flat Washer	(2)
M6 Nyloc Nut	(6)
1/4" Drill Bit	(6)



License Plate Bracket



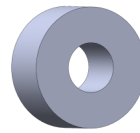
(2) M6x25mm Button Head Bolt



(4) M6x16mm Hex Head Bolt

Installation Photo Examples:

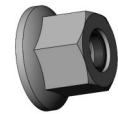
Polaris General XP/XP4	PG 1
Yamaha Wolverine RMAX 4	PG 2



(2) Spacer



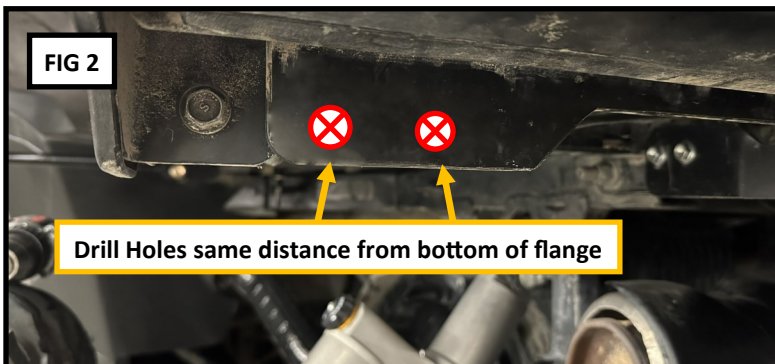
(2) M6 Flat Washer



(6) M6 Nyloc Nut

Installation:

1. Choose a locations to mount the license Plate Bracket. We chose a plastic rib under the bed near the rear. **(FIG 1)**
2. Level and center the bracket and mark the two top holes. **(FIG 2)**
3. Drill the two marked holes with the provided a **1/4" drill bit**. **(FIG 3)**
4. Install the **License Plate Bracket** with the provided **(2) M6x25mm Bolts & (2) M6 Washers** and **(2) Nyloc Nuts**.
5. A license plate can now be installed onto the bracket using the remaining **(4) M6x16mm Bolt & (4) Nyloc Nuts**.



Enjoy the use of your new Tusk License Plate Bracket!

Yamaha Wolverine installation:



Frame

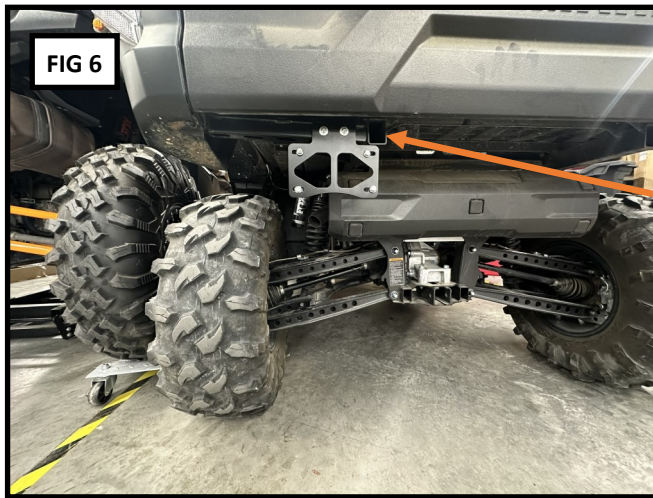
Frame

Check fitment of bracket in desired location



Draw Level Line

Center marked holes over openings in frame



Spacers used to offset plate from uneven mounting surface

This bracket is often paired with the Tusk Plug and Play Signal & Horn Kit. You may not need to use all 4 bolts to install the bracket onto the machine. The license plate light can be used to secure the license plate (Part #1444830001).

Enjoy the use of your new Tusk License Plate Bracket!